

Description of Changing Ball Bearings at Wind Direction Transmitter - compact 4.3130.00.700



Remark

The mounting of ball bearings requires much care, know-how, and cleanliness in order to achieve an optimum capacity.

Incorrect mounting of ball bearings might challenge the value of even the best construction, and cause additionally costs in repair and maintenance.

Instruction for the correct mounting of ball bearings:

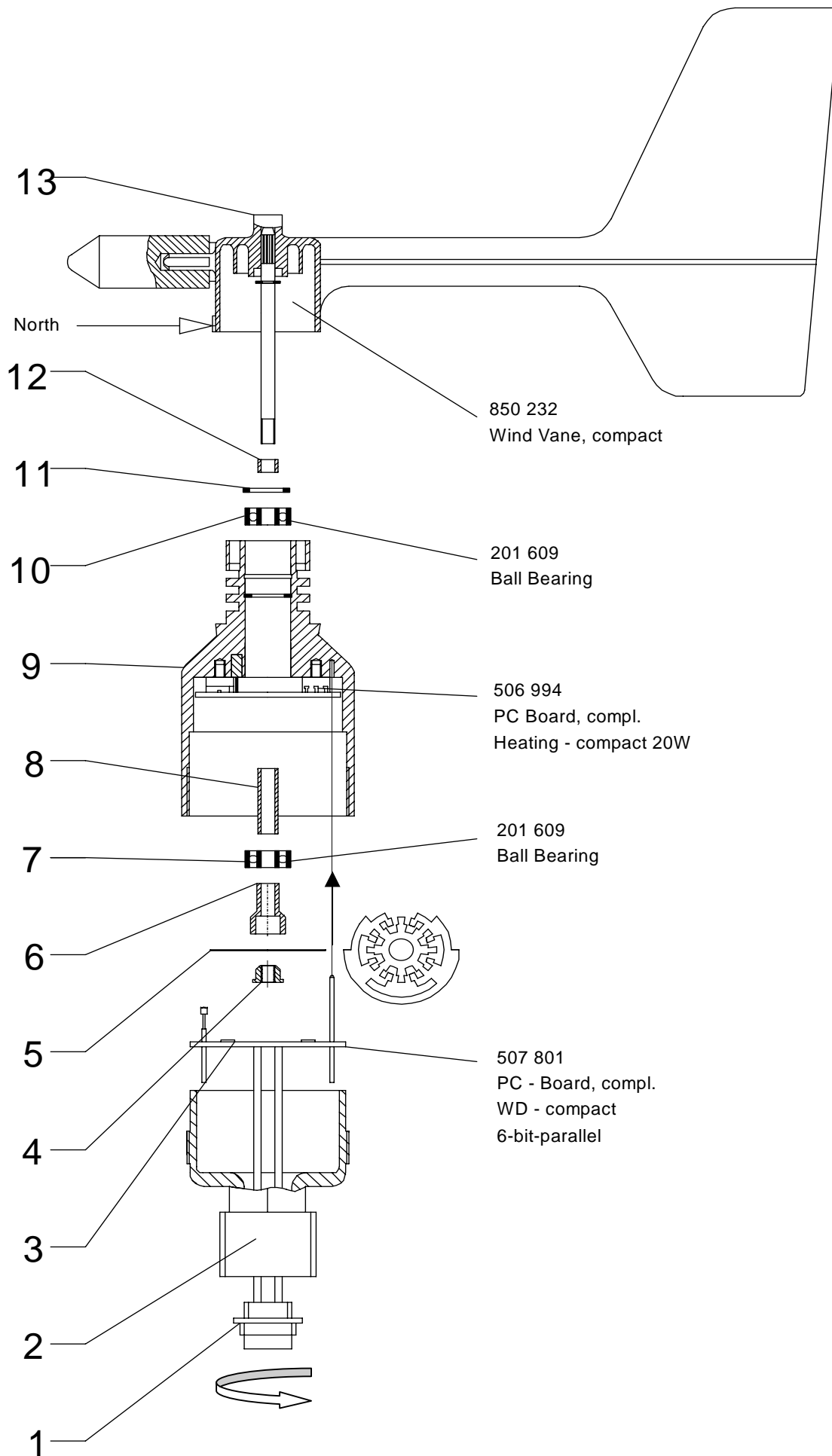
- For the mounting of ball bearings it is advisable to use a possibly dust-free room where there are no cut-workings or workings with compressed air..
- The ball bearings should be taken out of the packing only immediately before mounting.

Mounting

1. Remove plug item 1 by counter clockwise rotation
2. Screw off and remove receptacle item 2 by counter clockwise rotation together with pc-board item 3.
3. Remove nut item 4 by counter clockwise rotation (hold on wind vane)
4. Remove code disc item 5, and nut item 6.
5. Pull upward and remove wind vane item 13.
6. Remove retaining ring item 11.
7. Drive out the stuck-in (Loctite Type 259) upper ball bearing item 7, and the lower ball bearing item 10 by means of a thorn.
8. Clear sticking remainders off the seat of ball bearings by means for a reamer or triangular scraper; clean the surfaces with petroleum ether afterwards.
9. **IMPORTANT:**
Ball bearings must be built-in under dust-free conditions, and without mechanical impact load .
10. Take the new ball bearings 201 609 out of the packing, and clean the exterior surfaces of the bearings with petroleum ether – oil- and grease-free.
11. Insert the upper ball bearings straight – not tilted – into the housing item 8, and secure it with “Loctite 259”; let it dry for 1 to 2 hours afterwards.
12. Fix the upper ball bearings item 10 again by the retaining ring item 11.
13. Put the wind vane item 13 with the distance tube item 12 through the ball bearings, and push the distance tube item 8 onto the axis from below.
14. Insert the lower ball bearings straight – not tilted – into the housing item 8, and secure it with “Loctite 259”.
15. Push the nut item 6 and code disc item 5 onto the axis, and tighten up by nut item 4.
16. Insert pc-board item 3 with the guide pin into the housing item 8.
17. Screw-tight receptacle item 2 by clockwise rotation, and stick it all round with “Loctite 460”.
18. Turn plug item 1 in 3 counter clockwise rotations before screwing-in, and then screw tight receptacle item 2.
19. Electrical connection of transmitter to test instrument – correct north marking when aligning instrument to north.

	ADOLF THIES GmbH & Co. KG		
	Hauptstraße 76 37083 Göttingen Germany P.O. Box 3536 + 3541 37025 Göttingen Phone ++551 79001-0 Fax ++551 79001-65 www.thiesclima.com info@thiesclima.com		

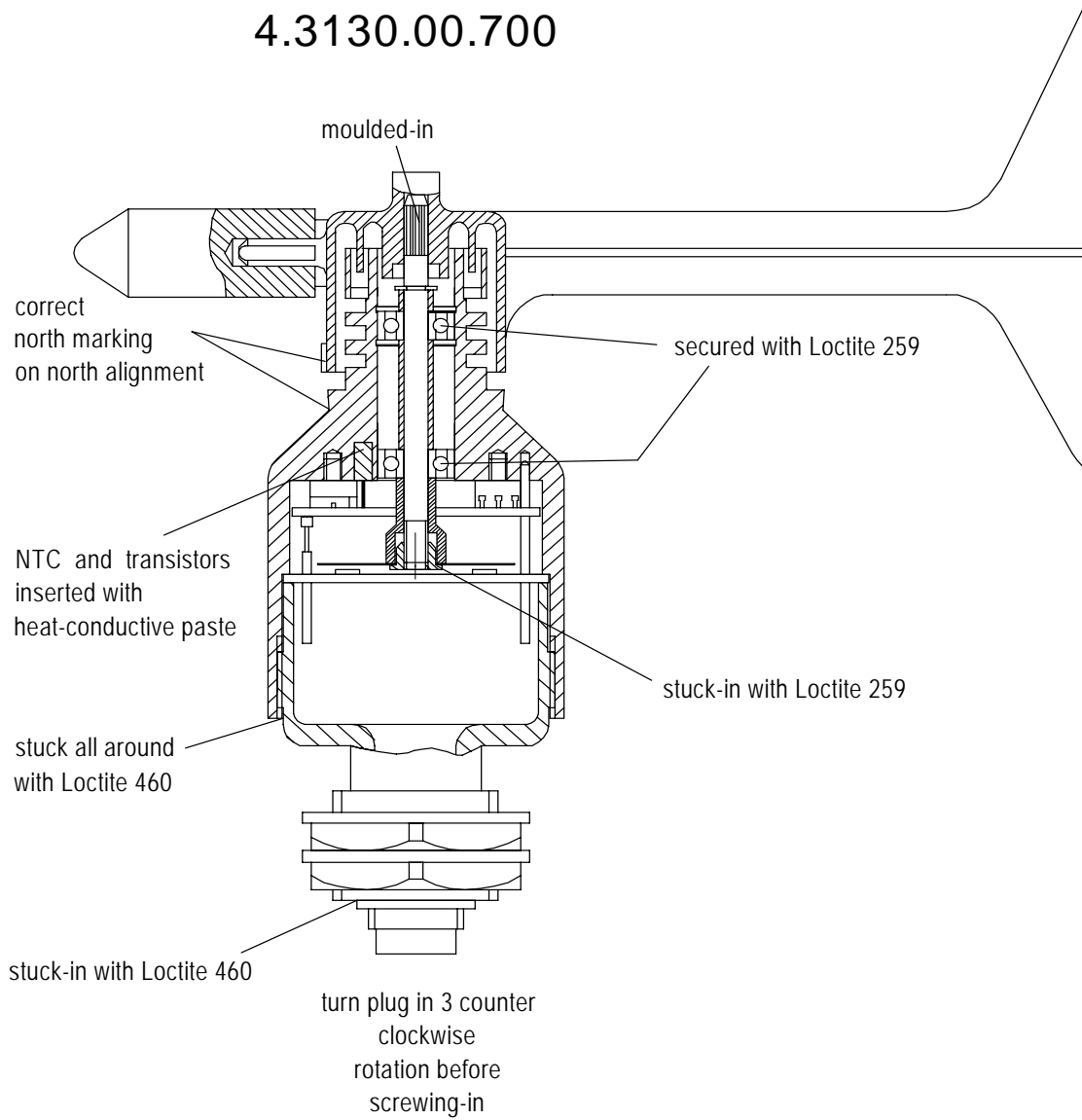
- Alterations reserved -



Wind Direction Transmitter - compact

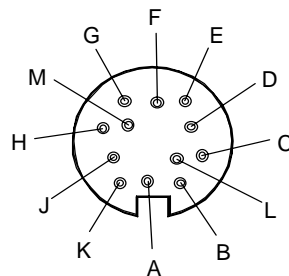
Output 6 bit Gray Code parallel; 12 pin Plug

4.3130.00.700



Wiring

see 4.3130.00.700 - 4 - 04



Plug - Soldering side

Wiring 4.3130.00.700-4-04

